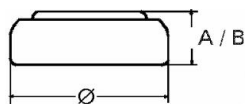


Type Number..... 344
Designation IEC..... SR 42
System..... Silver oxide/ Zinc /
 NaOH - Electrolyte



Nominal Voltage..... 1,55 V
Typical Capacity C..... 105 mAh
 Load 5,6 k Ω , at 20°C down to 1.2 V

Weight (approx.)..... 1,45 g
Volume..... 0,38 ccm
Coding..... Manufacturing Month/Year
 by Letter Code

Temperature Ranges	min	max.
Storage.....	0°C	60°C
Discharge.....	0°C	60°C

Dimensions	min	max.
Diameter.....	11,25	11,60
Height (A/B).....	3,30	3,60

Typical Capacities (at 20°C)

Discharge Type	Load	End Voltage: 1.2V	
Continuous 24h/d, 7d/w	5600 Ω	Time:	405 h
		Capacity:	105 mAh
		Energy:	160 mWh

No publication or circulation of data to third parties without consent of VARTA Consumer Batteries

All Data contained herein is for single cells For battery applications, performance data may vary from single cell data, depending on specific battery configuration